

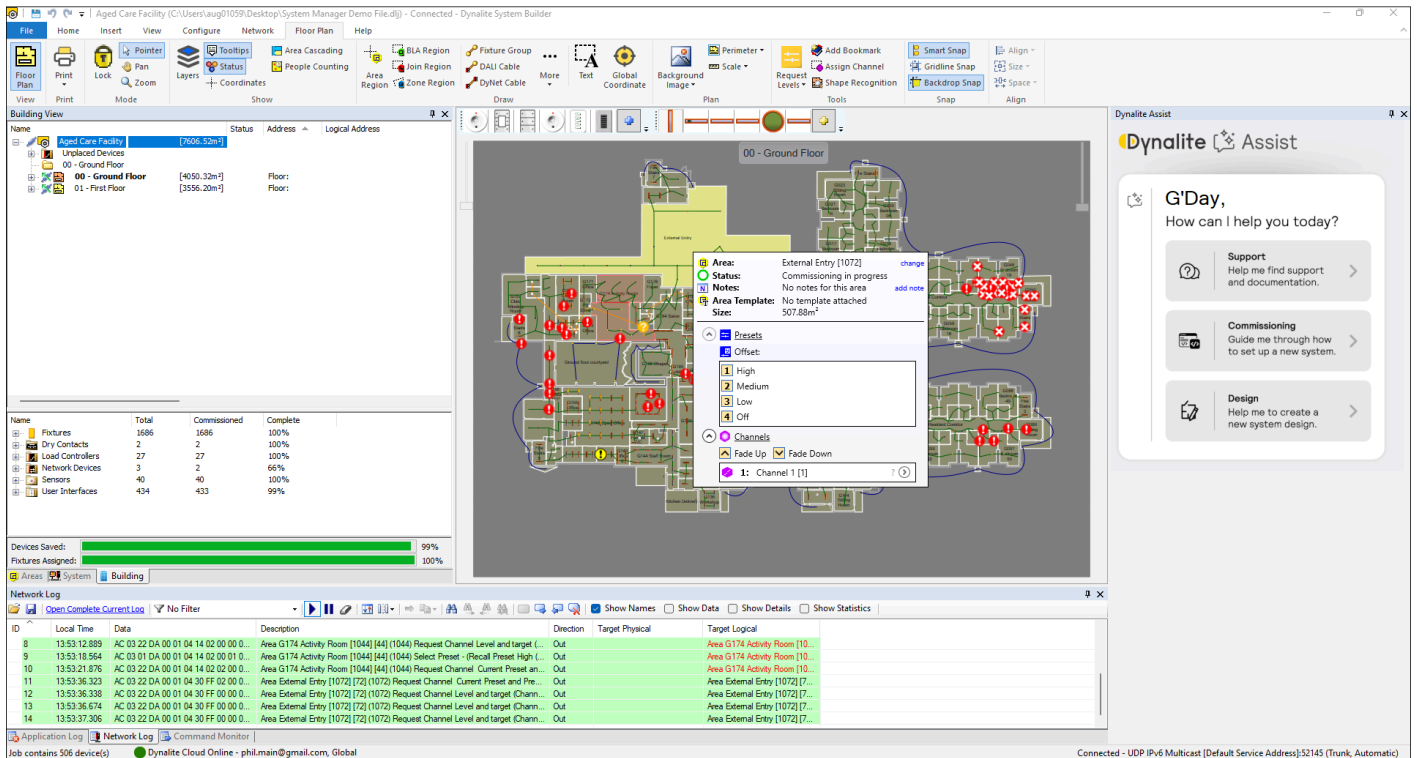
System Builder 5.49

Commissioning software



Specification Sheet

Software > Pro Workflow



Fast and efficient lighting control system setup

Designed with the system installer and integrator in mind, Dynalite System Builder (the "Software Services") is a comprehensive commissioning platform.

This user-friendly and intuitive application sets a new benchmark for efficient lighting control system setup.

Key Features

- **New and improved set-up templates** - Provides a simple and intuitive interface for access to advanced system functionality, allowing flexibility to modify, customise, or create specific tasks if required.
- **Faster commissioning times** - Includes a series of common device settings based on typical lighting control scenarios. Tailor to your project, save and replicate across other sites as required.
- **Virtual panel** - Control any area of the system directly, run sequences and test final operations.
- **Complex functionality made simple** - Manage logical grouping of lamps and other system hardware elements using simple graphical representations.
- **Maintenance made easy** - Print out project floor plans with fixture details, including DALI addresses, to facilitate maintenance planning.
- **Live data details** - The status of each lamp is visually represented using icons, which change color to reflect current lighting levels.
- **Monitor the whole system** - Inbuilt network monitor details and logs all Dynalite network traffic, as well as DALI network traffic.
- **Dynalite Assist** - Ask our friendly online AI support assistant for help with products, specifications, case studies, commissioning advice, and information from any Dynalite documentation.

System Builder 5.49 Specification Sheet

Compatibility

Dynalite System Builder is designed to work exclusively with Dynalite systems and devices.

Operating Environment

Dynalite System Builder is an application installed locally on your Windows-based desktop or laptop. The following requirements are needed on your machine to support the Software Services:

Software Requirements	
Operating System	Windows 10 / 11 Windows Server 2022
Microsoft.NET Version	4.8 or later

Hardware Requirements	
Platform	Intel / AMD 64-Bit
CPU	≥ 2.5 GHz, 2+ cores
RAM	≥ 16 GB
Storage	≥ 20 GB available (SSD recommended)
Display Resolution (Minimum)	1024x768
Display Resolution (Recommended)	≥ 1920x1080
Notes	Minimum requirements may vary depending on project size. Larger projects may require improved hardware specification.

Ordering

System Builder can be downloaded for free from support.dynalite.com, or via your Dynalite partner or Signify representative.

Policies and Notices

Security

The Software Services are covered by the Signify Security Statement, which is available at signify.com/global/product-security/professional-systems-and-services.

A product-specific security statement may be available on request at Signify's discretion and subject to confidentiality conditions.

Usage Restrictions

The Software Services should not be used for any purpose other than stated in this specification sheet.

The Software Services and any data generated or processed thereby must not be used or relied upon for applications or activities where the use or failure of the Software Services could lead to death, personal injury, or environmental damage.

Applicable Terms and Conditions

The access and use of these Software Services are subject to our most recent Terms of Software Services as published at: [Terms of Software Services](#)

Dynalite Cloud Integration

Additional terms and conditions apply when accessing [Dynalite Cloud](#) services via the Software Services. Please refer to the Dynalite Cloud Platform Specification Sheet for more information.

Data

If we process personal data, we will do so in accordance with our [Data Processing Agreement and applicable data processing schedule\(s\)](#) or [Privacy Notice](#), as applicable to our role in that processing.

Software End of Life Policy

The Software Services are subject to Signify's End of Life policy that can be found here: [Policies & Announcements](#)

Open Source Software

An overview of included open source software is available in the Software Services program folder, typically: `C:\Program Files\Dynalite\System Builder\License.txt`

Update / Upgrade

Signify Dynalite may release updated and/or upgraded versions of the Software Services from time to time, at its discretion. For any such update or upgrade, the main changes are indicated in the release notes. Changes may not be reflected in an update of this document.

Disclaimer

This Software Specification represents the current specification of the Software Services as of the date of publication of this document but is provided 'as is' without warranty of any kind, whether express or implied. This information is subject to change without notice. Customers are responsible for making their own independent assessment of the Software Services and the use thereof. Any commitments or liabilities in respect hereof are exclusively defined in the agreements between Signify Dynalite and its customers.

More detailed information about the Software may be available on request but at Signify's discretion.